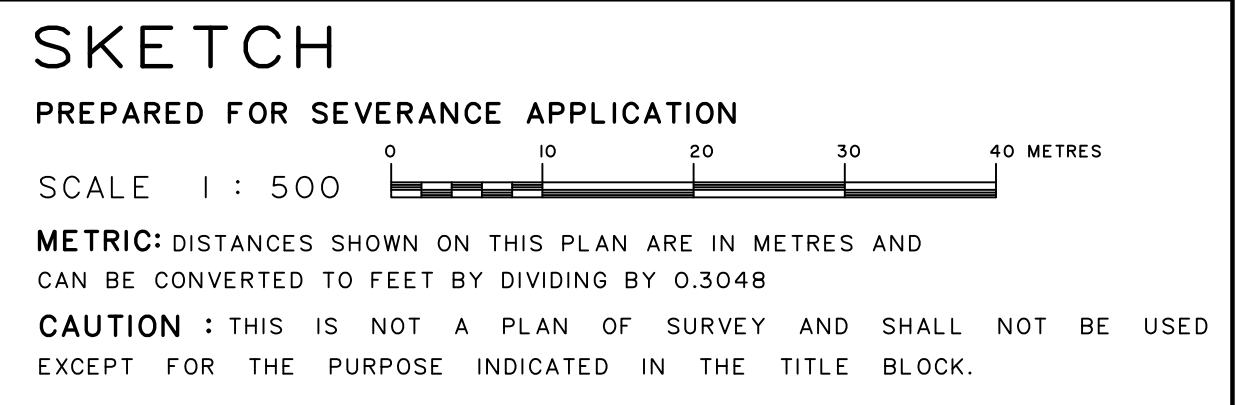
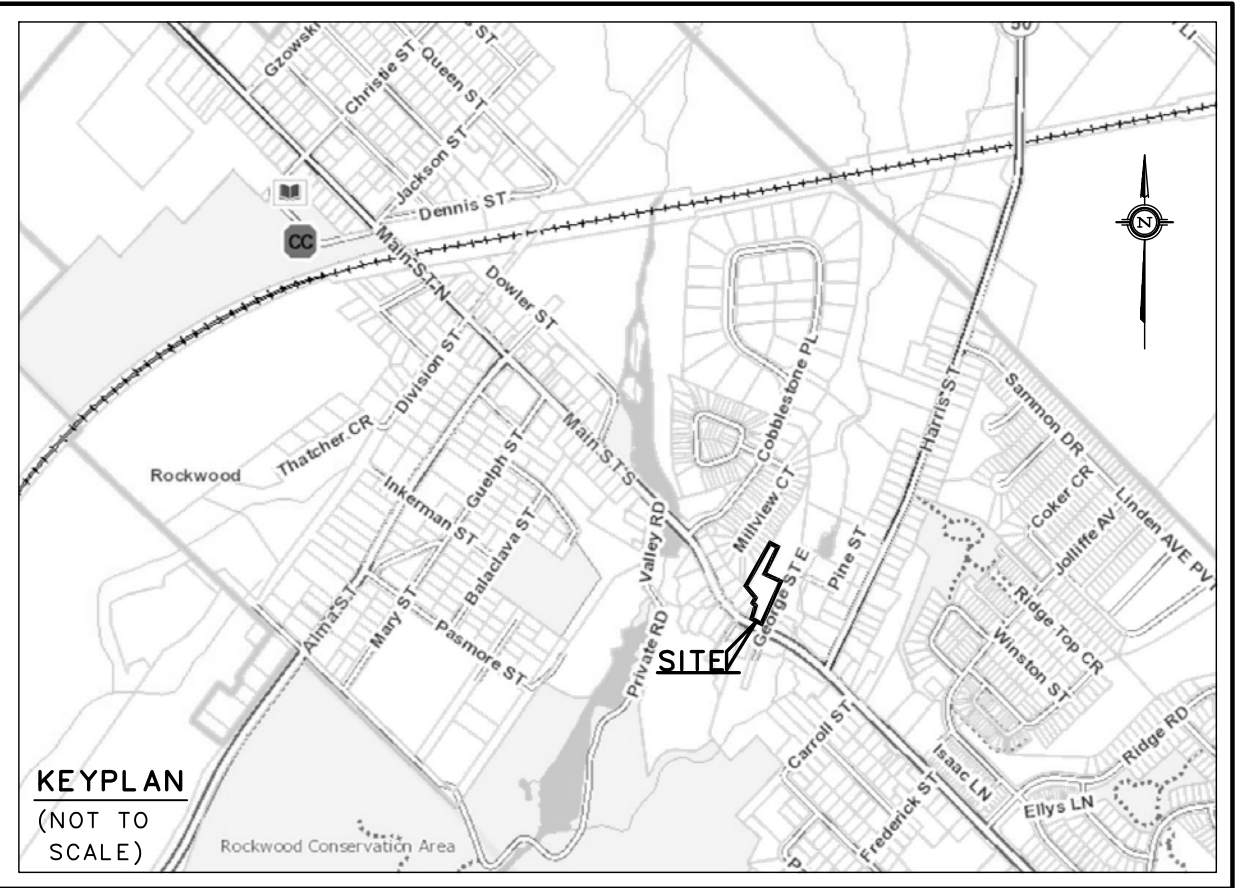
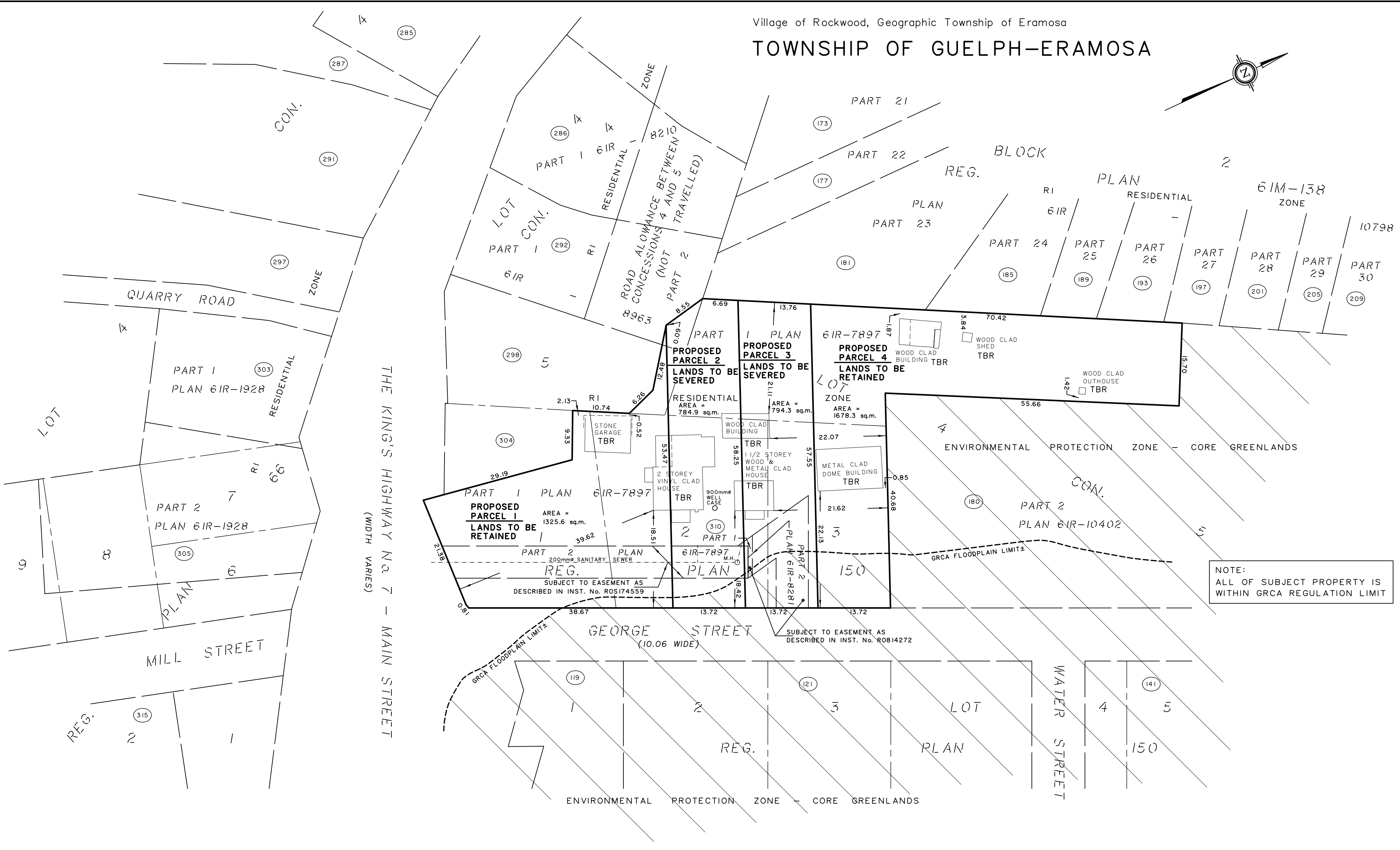
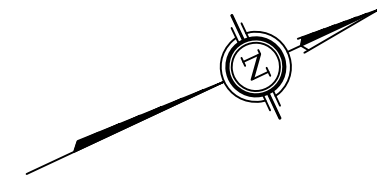


Village of Rockwood, Geographic Township of Eramosa
TOWNSHIP OF GUELPH-ERAMOSA



- NOTES AND LEGEND:**
- DIMENSIONS SHOWN HEREON ARE AS SHOWN ON DEPOSITED PLANS 61R-7897 AND 61R-10402 AND DO NOT REFLECT THE RESULTS OF AN ACTUAL CURRENT FIELD SURVEY.
 - THE POSITION OF ALL POLE LINES, CONDUITS, WATER MAINS, SEWERS AND OTHER UNDERGROUND AND OVERHEAD UTILITIES AND STRUCTURES IS NOT NECESSARILY SHOWN ON THIS PLAN, AND WHERE SHOWN, THE ACCURACY OF THE POSITION OF SUCH UTILITIES AND STRUCTURES IS NOT GUARANTEED. BEFORE STARTING WORK, THE CONTRACTOR SHALL INFORM HIMSELF OF THE EXACT LOCATION OF ALL SUCH UTILITIES AND STRUCTURES, AND SHALL ASSUME ALL LIABILITY FOR DAMAGE TO THEM.
 - GRCA FLOODLINE LIMIT WAS TAKEN FROM ONLINE MAPPING AND ITS POSITION IS ONLY APPROXIMATE.
- (181) DENOTES MUNICIPAL ADDRESS
 GRCA DENOTES GRAND RIVER CONSERVATION AUTHORITY
 TBR DENOTES TO BE REMOVED
 M.H. DENOTES MANHOLE

THIS SKETCH WAS PREPARED FOR 2609350 ONTARIO INC. AND THE UNDERSIGNED ACCEPTS NO RESPONSIBILITY FOR USE BY OTHER PARTIES.

KERRY F. HILLIS
 ONTARIO LAND SURVEYOR

© COPYRIGHT 2018: REPRODUCTION, DISTRIBUTION OR ALTERATION OF THIS PLAN, IN WHOLE OR IN PART, WITHOUT THE WRITTEN PERMISSION OF BLACK, SHOEMAKER, ROBINSON & DONALDSON LIMITED IS STRICTLY PROHIBITED.

BLACK, SHOEMAKER, ROBINSON & DONALDSON LIMITED

BSRD Ontario Land Surveyors
 Urban and Rural Planners
 A wholly owned subsidiary of J.D.Barnes Ltd. WWW.BSRD.COM

101-257 Woodlawn Road West FAX: (519) 822-1220
 Guelph, Ontario N1H 8J1 TEL: (519) 822-4031

DATE: APRIL 11, 2018 DM PROJECT 18-14-624-02